

## **Pre-bid Virtual Tour Guide 2025 Lehigh Road Phase X and Scranton Phase IV AML Project**

The Pre-bid, Virtual Tour replaces the mandatory pre-bid, onsite meeting that was required in the past for AML drilling and grouting projects. This document does not replace or take precedence over the Invitation for Bid (IFB) or any other project documents.

- The 2025 Lehigh Road Phase X and Scranton Phase IV AML Project IFB can be found by searching the State Procurement Office (SPO) website at:

<https://apps.nd.gov/csd/spo/services/bidder/main.htm>

### **Bidding Information (Section 1 of IFB)**

1. Bid opening: **Tuesday, April 8, 2025, at 10:00 A.M., Central Time (CT)**. Read the IFB completely, bidder's instructions are included. Late bids will not be accepted.
2. Include a 5% bid bond or cashier's check with bid package.
3. Deadline for questions is **March 27, 2025, at 5:00 P.M., CT**. Questions must be submitted in writing. Emailed questions are accepted at [bjob@nd.gov](mailto:bjob@nd.gov)
4. All attached forms must be completed with the bid.

### **2025 IFB Points to Highlight**

1. Performance Period: **May 19 to August 8, 2025**. The contractor is expected to start soon after the start date. Weather delays must be documented by GROUT CONTRACTOR and reviewed by Commission's Project Manager.
2. All Quantities are Estimated: No allowance will be made for any increased expense, loss of expected reimbursement, or loss of anticipated profits suffered or claimed by GROUT CONTRACTOR resulting from either field conditions or unbalanced bid prices or any other cause.
3. Pre-Construction Requirements:
  - a. Pre-construction workshop: GROUT CONTRACTOR shall plan and conduct an informational pre-construction workshop at the site at least 3 business days prior to beginning work.
  - b. Aggregate source(s) with NDDOT Material Source Certificate(s) of Approval and initial gradation.
  - c. Schedule of Construction: start and completion dates for mobilization, drilling, grouting; list of all equipment needed to complete the job; method of grout formulation and delivery; safety plans.
  - d. Utility Locates: The 2025 Lehigh Road Phase X and Scranton Phase IV AML Project sites will require both private and public utility locates. The locate

requests and renewals must be sent to the project manager as they become available.

Once these items are completed and approved, a Notice to Proceed (NTP) will be issued. If work cannot begin as specified on the NTP, GROUT CONTRACTOR shall provide a written explanation of the delay and request an alternate firm start date. The Performance Period will remain unchanged.

4. Fugitive Dust Control
5. Payments - Invoices may be submitted no later than the **1st and 15<sup>th</sup>** of each month for payment on the 10<sup>th</sup> & 25<sup>th</sup> of the month. Payments are only made on the 10 and 25<sup>th</sup>. Submit signed invoices to the Commission's Project Manager.
6. Traffic Control
7. Clean-Up Provisions

#### **Work Plans: Drilling and Grout Pumping**

1. The Commission's Project Manager will determine the drilling and grout pumping sequences. Please see the preliminary drilling paths and existing cased holes to be pumped on the project maps (pages 4-5). Drilling must be available during grout pumping. Scranton Phase IV will be completed before Lehigh Phase X can commence.
2. Excess grout must be cleaned up daily and hauled off-site as soon as possible. Once a hole is filled the casing must be removed immediately.
3. All casing used as a conduit for grout must be removed immediately upon refusal or completion of pumping that hole. PVC casing must be removed as soon as possible on holes filled by adjacent pumping, but not more than 24 hours after the hole is completed.

The North Dakota Public Service Commission will be performing a before and after certified railroad inspection of the track adjacent to drilling and grouting construction in Scranton. The Grout Contractor must use a laser level and provide skilled personnel to monitor ground movement continuously during pumping operations near all paved roads, railroads, and within 250 feet of structures. Work must be halted if movement is detected.

#### **Work Plans: Scranton Site Access Road Installation**

1. Access road installation must be completed prior to drilling operations. Please see **Figures 11-16** to see current surface conditions and topography.
2. The road will be approximately 160 feet long, 10 feet wide, and contain 12 inches of Class 5 gravel. The road must be installed in two 6" lifts with the specified geotextile fabric underneath.
3. The contractor will maintain this road until project is completed.

## Documentation

1. The GROUT CONTRACTOR is expected to complete a drill log form for every hole and to submit drill log forms to the Commission's Project Manager daily. The required form is in Section 7 Attachments of the IFB.
2. Provide grout injection forms to Commission's Project Manager daily. The required form is in Section 7 Attachments of the IFB.

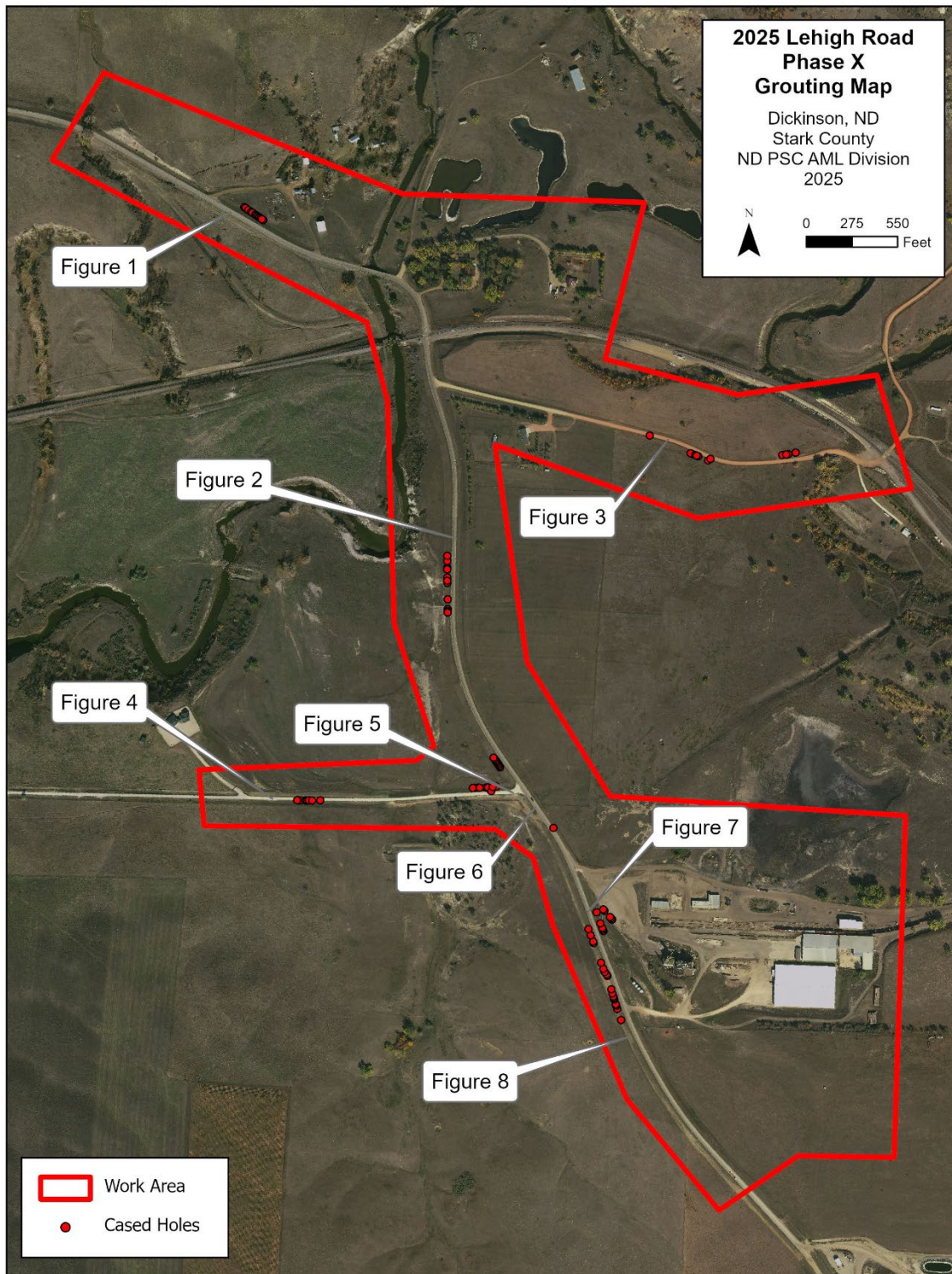
## Contractor Cooperation

1. It is the **GROUT CONTRACTOR'S responsibility** to ensure the Material Testing Contractor is given timely notification regarding pumping activities. The GROUT CONTRACTOR must give the Material Tester a **fixed firm start date for grout pumping at least 3 workdays prior to pumping**. The Material Tester will be required to be available on that date and for any pumping activities until the end of the project during the standard work week. During grouting, the GROUT CONTRACTOR must notify the material tester of any stoppages in pumping as specified in the IFB.
2. Bills of lading for all aggregate, fly ash, and cement shall be given to the Material Testing Contractor.

## Material Testing Contractor

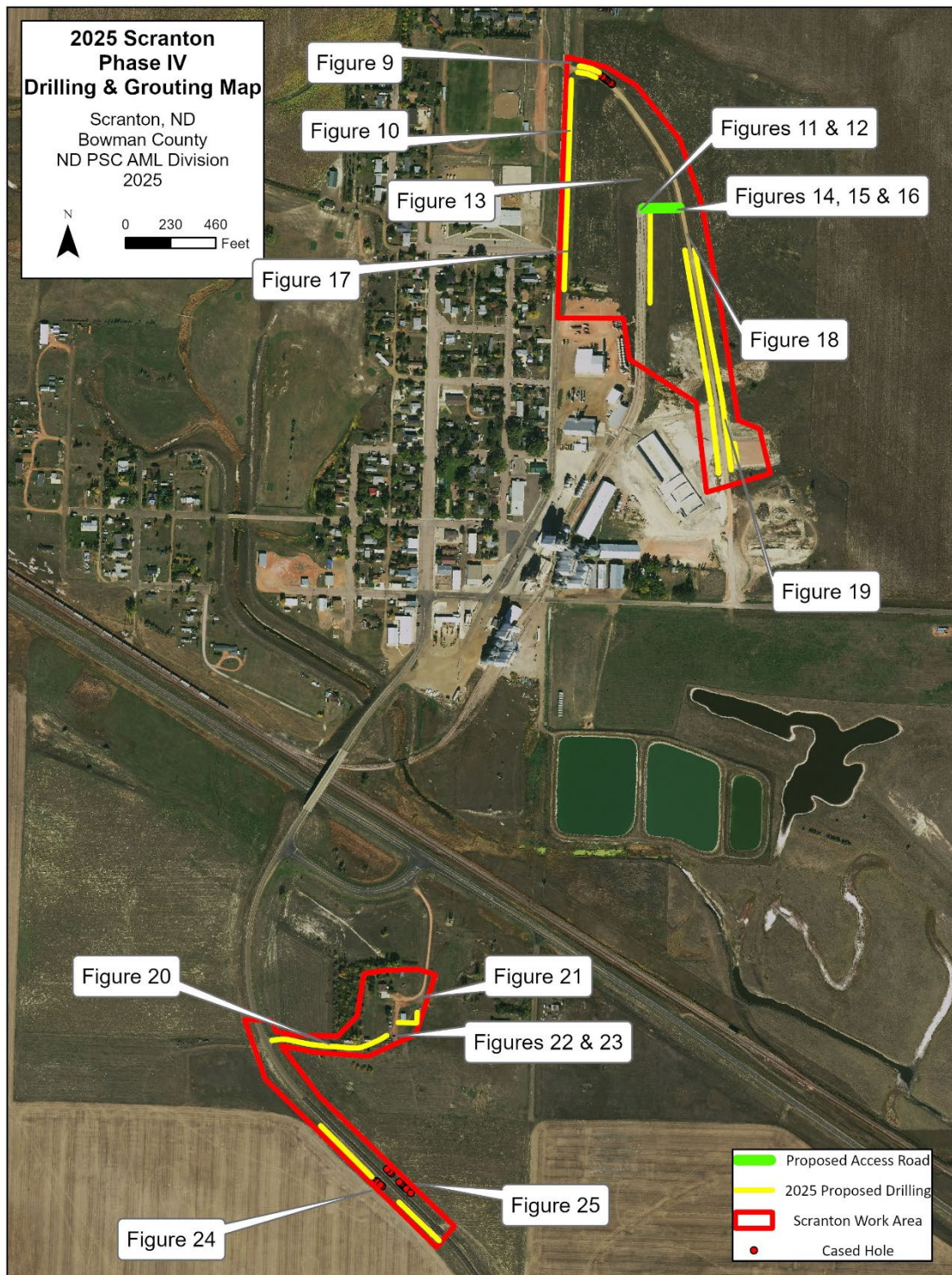
1. Material Testing Contractor will be responsible for performing six fine aggregate gradations and 110 series of concrete strength testing. Each series will contain three individual specimen breaks.
2. Material Testing Contractor will be responsible for providing sufficient storage for grout samples. This initial curing of concrete must comply with ASTM C31 for standard curing and transportation.
3. Materials Testing Contractor representative will be required to be on-site at all times during grouting operations. They will be required to collect all concrete tickets and record ready-mix truck arrival and departure times. These tickets will be given to the Commission's Project Manager or designated person daily.
4. Material Testing Contractor will be responsible for performing six (6) structural surveys (Pre-construction and Post-construction). These surveys will take place on three (3) separate buildings in Scranton.

**2025 Lehigh Road Phase X and Scranton Phase IV AML Project information and photographs are included in this document for CONTRACTOR reference.**



**Lehigh Road Phase X Project Map (Dickinson)**





**Scranton Phase IV Project Map (Scranton)**





**Figure 1 – Lehigh Road, Stark County Right of Way**



**Figure 2 – Lehigh Road, Stark County Right of Way**





**Figure 3 – Lehigh Drive, Stark County Right of Way**





**Figure 4 – 38<sup>th</sup> St SW, Stark County Right of Way**



**Figure 5 – 38<sup>th</sup> St SW, Stark County Right of Way**





**Figure 6 – Lehigh Road, Stark County Right of Way**



**Figure 7 – Lehigh Road, Stark County Right of Way**





**Figure 8 – Lehigh Road, Stark County Right of Way**



**Figure 9 – Landfill Access Road, Scranton Equity Exchange**





**Figure 10 – HWY 67, Bowman County ROW**





**Figure 11 – Private Rail Spur, Access Road Location**





**Figure 12 – Private Rail Spur, Access Road Location**





**Figure 13 – Private Rail Spur, Access Road Location**



**Figure 14 – Private Rail Spur, Access Road Location**





**Figure 15 – Private Rail Spur, Access Road Location**





**Figure 16 – Private Rail Spur, Access Road Location**



**Figure 17 – HWY 67, Bowman County ROW**





**Figure 18 – Landfill Access Road, Scranton Equity Exchange**



**Figure 19 – Landfill Access Road, Scranton Equity Exchange**





**Figure 20 – Farmstead Access Road**



**Figure 21 – Farmstead Outbuilding**





**Figure 22 – Farmstead Driveway and Buildings**



**Figure 23 – Farmstead Outbuilding and Driveway**





**Figure 24 – 133<sup>rd</sup> Ave SW, Bowman County Right of Way**





**Figure 25 – 133<sup>rd</sup> Ave SW, Bowman County Right of Way**